

IQfact for Design Verification Testing (DVT)

Description

IQfact™ DVT test software for design verification applications is a comprehensive set of WiFi physical layer transmitter and receiver tests utilizing a large set of channels, data rates and channel bandwidths. IQfact DVT can produce test results needed by IC manufacturers, ODMs and brand owners for product verification, characterization, qualification and validation in just hours instead of days of engineering time and equipment. Included data logging options enable the generation of internal testing reports or customer documentation using standard tools such as Excel. IQfact DVT program flow options include operation with or without test limits and flagging or stopping on failed tests.

IQfact DVT test programs are run on the LitePoint IQnrxn™ MIMO Test System.

Each IQfact DVT test program is individually designed to operate with a particular WiFi chipset. The operation of the program is flexible and can be configured to run all tests or a subset of the tests.

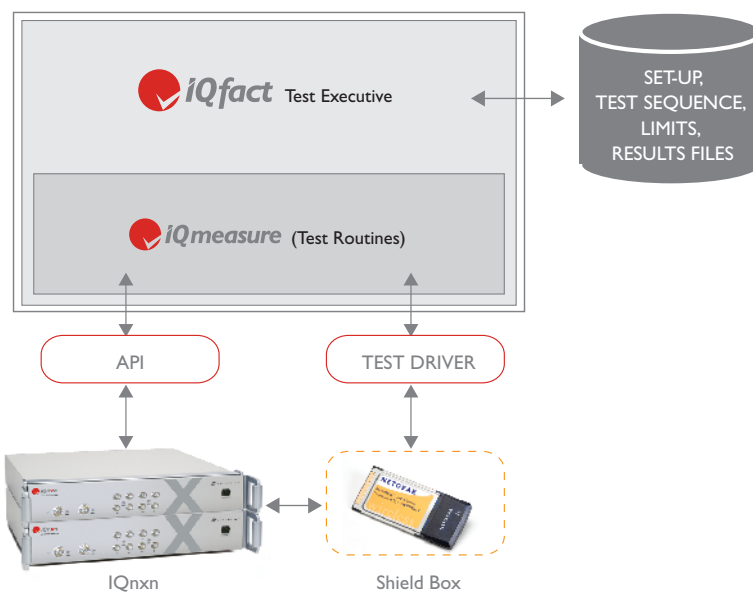
IQfact DVT joins other available IQfact mass production test programs spanning legacy WiFi chipsets, MIMO WiFi chipsets and Bluetooth® chipsets. IQfact test programs are available in single-user license and site-license versions. Time-limited demonstration versions are available for customer evaluation.

LitePoint is constantly releasing new and updated IQfact programs. A current list is available from your local LitePoint sales representative or by contacting LitePoint at: sales@litepoint.com.

Features

- Comprehensive receiver and transmitter parametric test suite individually designed for the latest WiFi chipsets
- Cost and time savings: reduces verification, characterization and validation testing from days to hours
- Supports latest MIMO WiFi chipsets
- Includes both 802.11a/b/g legacy and 802.11n MIMO tests
- Supports IQnrxn MIMO Test System platform
- Transmitter Tests (on all antennas)
 - Power
 - EVM
 - Frequency Error
 - Spectral Mask
- Receiver Tests (on all antennas)
 - Rx PER profile over a power level range
 - Rx PER at a given power level
 - Rx PER at max power
- Tests Options
 - All or selected channels
 - All or selected data rates
 - All or selected channel bandwidths
- Run-Time Options
 - DUT configuration
 - Test flow
 - Test limits
 - Data logging options

IQfact architecture.





What is IQfact?

iQfact is special purpose test executive and measurement software that is designed to be used out-of-the-box or modified to specific user needs. The program works with the IQnxn API (supplied with the IQnxn instrument) and a special purpose test driver for the WiFi chip set under test (supplied with the IQfact CD) to implement a recommended set of parametric tests which can be optionally compared to test limits to set pass/fail criteria. Test sequences, limits, chipset operating parameters and general program operation are controlled by easy-to-edit text files included with the IQfact test program.

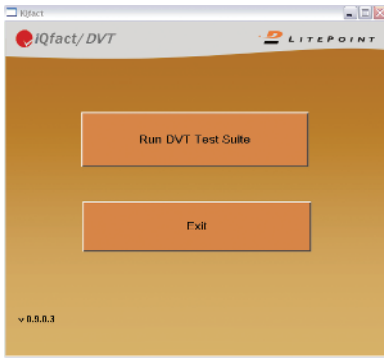


Fig. 1. IQfact DVT Start-up screen

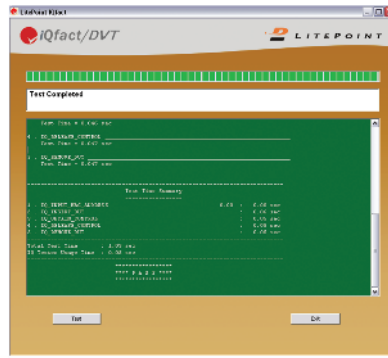


Fig. 2. IQfact DVT completion screen

System Requirements

- IQnxn MIMO Test System
- PC with Windows 2000 or XP; with a 10/100/1000 network connection
- Shield Box (required for reliable receive testing) with high quality RF cables supporting required SMA, N-type and other RF connectors and RF attenuators

Our commitment is to serve our customers' long-term technology and strategic needs.

LitePoint Corporation designs and markets innovative, dedicated test instrument solutions for existing high volume and emerging wireless products markets, such as IEEE 802.11 WLAN, IEEE 802.15.3a (WiMedia™), IEEE 802.16 (WiMAX®), and Bluetooth®, LitePoint solutions are designed specifically to simplify and accelerate standards compliance and performance tests.

Demo IQfact Today!

- Online - go to www.litepoint.com/demos/
- Live WebEx - go to www.litepoint.com/demos/webex/
- In person - call your local rep for an appointment

LitePoint is constantly releasing new and updated IQfact programs. A current list is available from your local LitePoint sales representative or by contacting LitePoint at: sales@litepoint.com.

LitePoint Corp. - Corporate Headquarters
575 Maude Court Sunnyvale, CA 94085 | +1.408.456.5000 | www.litepoint.com

iQview is a registered trademark, IQflex, IQnxn, IQmax, IQsignal, IQwave, IQfact, IQcheck, IQmeasure and TrueChannel are trademarks of LitePoint Corp. All other trademarks are the property of their respective owners. The information furnished by LitePoint Corp. is believed to be accurate and reliable. However, LitePoint assumes no responsibility for its use. LitePoint reserves the right to change specifications and documentation at any time without notice. © 2007 LitePoint Corp. 03/07

