

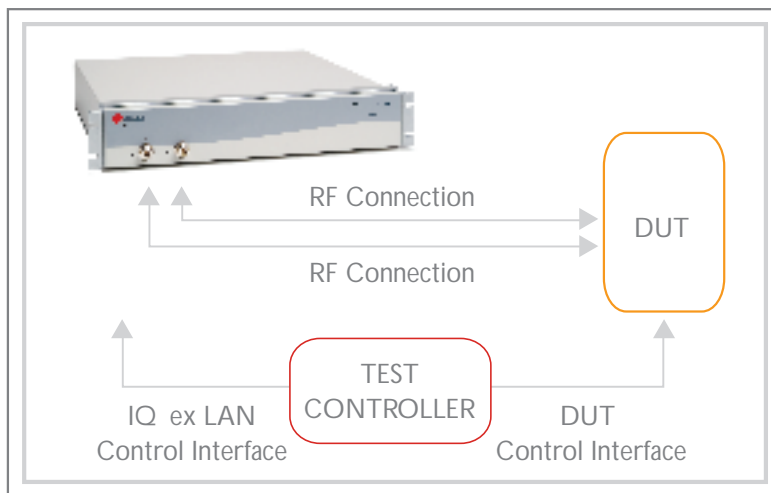
LitePoint ZigBee Software Package

Description

Users of Litepoint IQview® and IQ ex® can now test ZigBee® 802.15.4 standard enabled devices with the LitePoint ZigBee Software Package. Production test programs for the manufacturing floor can now be developed that allow ZigBee products to be tested by one-box test instruments and saving substantial manufacturing costs.

The ZigBee Software Package includes new API commands and integration of Offset Quadrature Phase Shift Keying (O-QPSK) modulation support into the LitePoint IQsignal™ Analysis Software (IQview installations only). When installed, the ZigBee Software Package is automatically recognized by the IQview/IQ ex test analysis software and the software integrates seamlessly into the test environment.

ZigBee DUT (Device Under Test) test commands are made through the chip vendor's test control interface for faster set-up times and LitePoint capture-once-measure-all hardware implementation allows full Rx and Tx testing with very few signal captures for the fastest test times.



Typical test system connections for ZigBee Testing

Frequency Range

2.4-2.5 GHz band

Features

ZigBee Software Package provides:

Transmit Group

- Maximum output power
- Minimum output power
- Out of band spurious
- Spectral density mask
- Symbol rate error
- RF center frequency error
- EVM

Receive Group

- Receiver sensitivity
- Maximum input level
- Energy Detection

Advanced Analysis

- Peak power
- Average power
- Average no-gap power
- Number of Symbols
- Packet CRC check
- Integrated Phase Noise

Graphical Views

- Code domain power
- Spectrogram
- Eye Diagram
- CCDF
- Symbol Constellation
- Phase Error
- I&Q baseband
- EVM vs symbol



LitePoint ZigBee Software Package

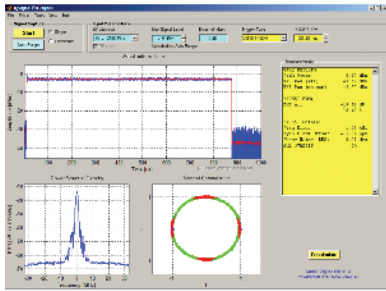


Fig 1. IQsignal analysis with ZigBee support

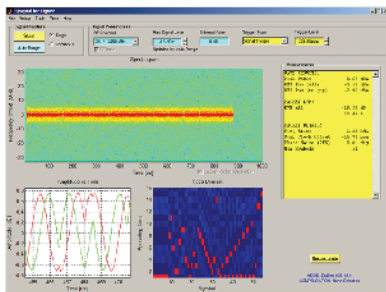


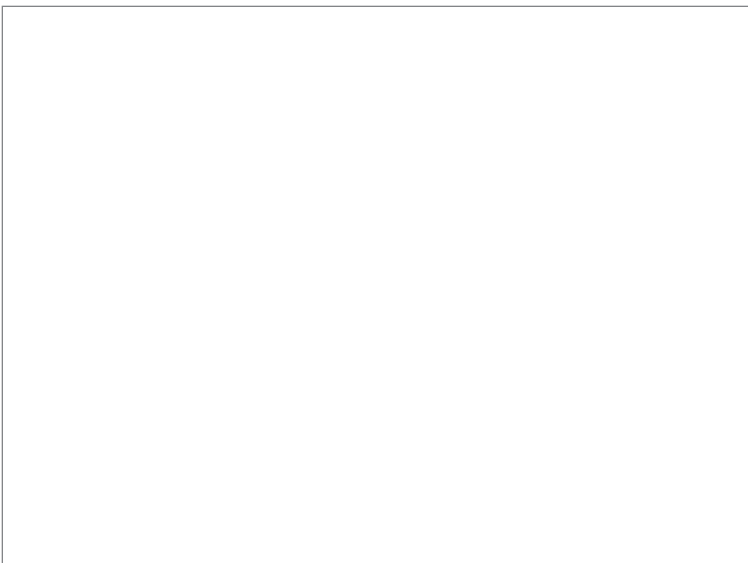
Fig 2. IQsignal analysis with ZigBee support

System Requirements

Requirements for the LitePoint ZigBee Software Package are IQview or IQview ex software versions 1.4.7 or later and IQview and IQview ex hardware versions 1.3.6 or later.

How to Get It

The ZigBee Software Package is licensed on a per-user-basis. A site license package is available. The ZigBee Software Package carries a one-year warranty including updates accessed through the LitePoint Resource Center support site. Extended warranties are also available.



Our commitment is to serve our customers' long-term technology and strategic needs.

LitePoint Corporation designs and markets innovative, dedicated test instrument solutions for existing high volume and emerging wireless products markets, such as IEEE 802.11 WLAN, IEEE 802.15.3a (WiMedia™), IEEE 802.16 (WiMAX®), and Bluetooth®. LitePoint solutions are designed specifically to simplify and accelerate standards compliance and performance tests.